

Prac: Ohm's Law

Name: _____

Aim: To investigate the relationship between voltage and current in a conductor

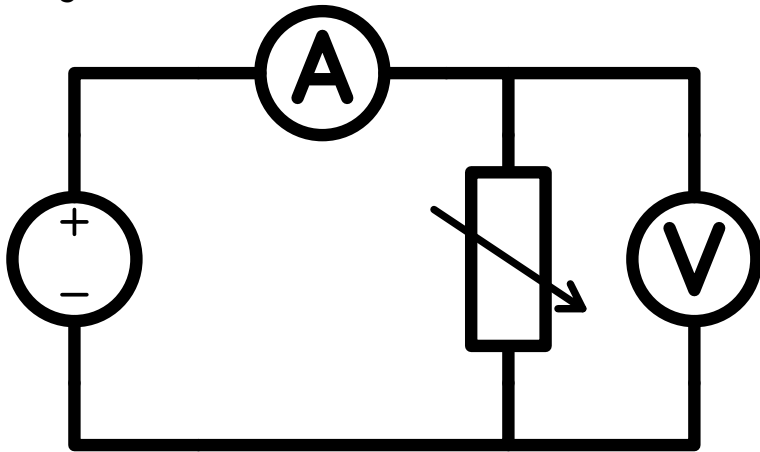
Equipment and Materials: (E grade)

This is a list of things you needed to do the experiment

Method:

Write a numbered list of steps that were done in this prac (C grade)

Diagram:



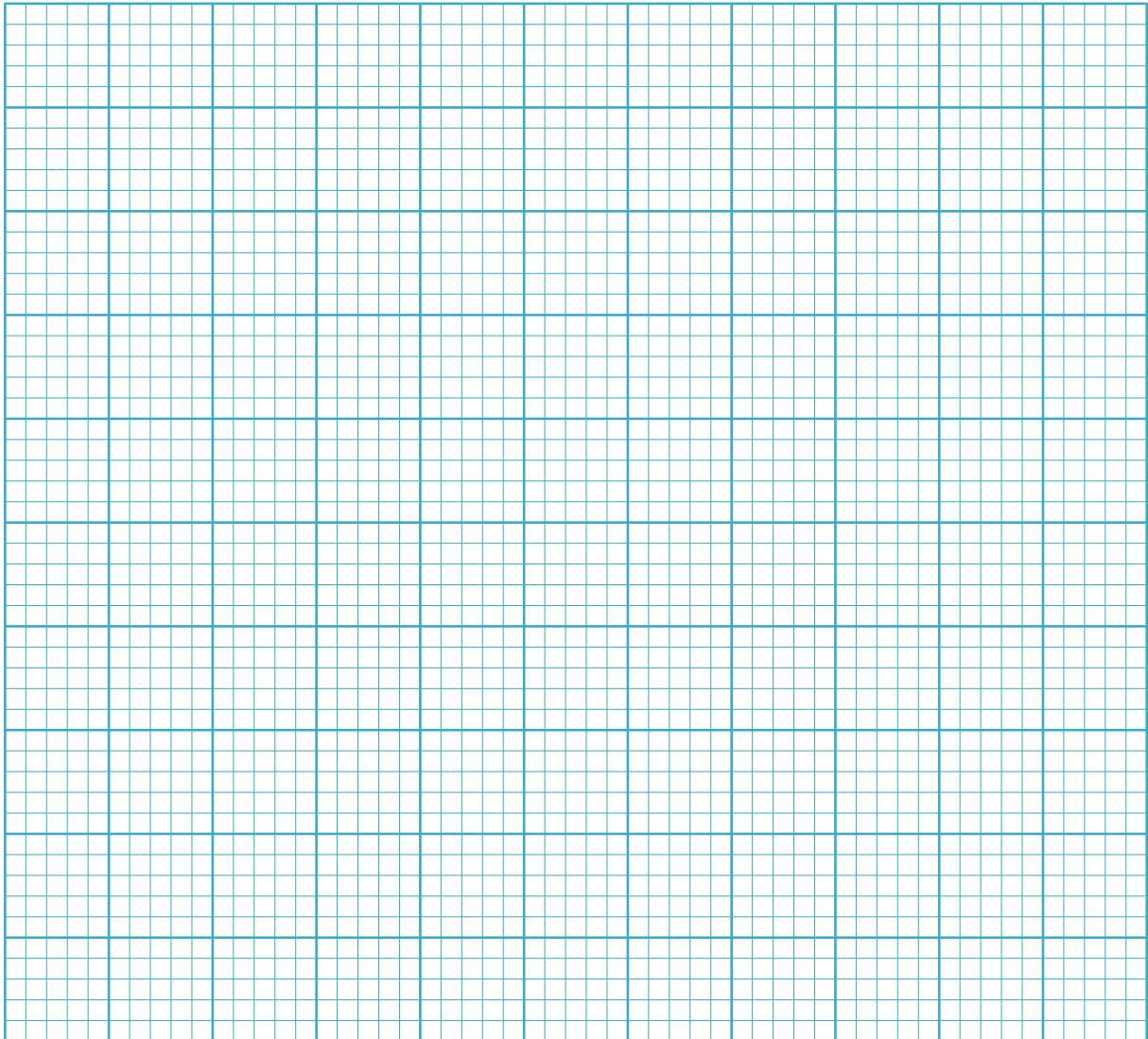
Results:

Table (D grade, C grade for the last column)

Power pack voltage (V)	Current (A)	Voltage (V)	Resistance [=V/I] Ω

Line Graph (C grade)

(You need a title, axis labels with units and scales, plot the data with V on the vertical axis, I on the horizontal axis, and draw a straight line of best fit)



Discussion:

1. Were most of the data points near or on the line of best fit? (B grade)

2. Were most of the resistance values in the table similar to each other? Did you expect this? (B grade)

3. What does the gradient of the line of best fit represent? Explain your answer (A grade)

Conclusion (C grade):

Write one sentence that relates to the aim.
